

Thank you for purchasing the M10 Barracuda USB Modem which conveniently provides support for wireless broadband communication using 3G/UMTS/HSDPA/HSUPA technologies. The modem supports bandwidths up to 7.2 Mbps and thus provides a cost effective alternative to xDSL and ISDN uplinks or failover lines. **Note: SIM card is not included and has to be obtained independently through your cell phone provider.**

## Packaging Content:

- One USB Modem
- One USB Cable
- One external Antenna
- One Quick Start Guide

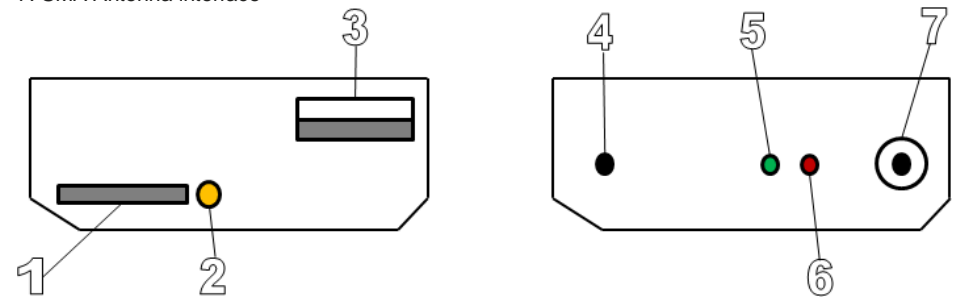
Please contact Barracuda Networks Support if any of these items is missing.

## Modem Specifications:

| USB Modem                   |   |
|-----------------------------|---|
| Frequencies (MHz)           | GSM 850/900/1800/1900<br>UMT S850/1900/2100<br>UMT S2100  |
| Output Power                | Class4 (+33dBm ±2dB) for EGSM900<br>Class 1 (+30dBm ±2dB) for GSM1800<br>Class E2 (+27dBm ± 3dB) for GSM 900 8-PSK<br>Class E2 (+26dBm +3/-4dB) for GSM 1800 8-PSK<br>Class 3 (+24dBm +1/-3dB) for UMTS 2100, WCDMA FDD Bdl |
| Supported Data Transmission | HSUPA<br>HSDPA<br>3G<br>UMTS<br>EDGE  |
| SIM Interface               | 3VDC 6 pin  |
| Power Supply                | 5 VDC via USB Interface   |
| USB Interface               | USB 2.0   |
| Dimensions (LxWxH mm)       | 71 x 49 x 20  |
| Net Weight (g)              | 150   |
| Operation Temperature       | 0 °C – 40 °C  |
| Certifications              | FCC, CE, ROHS   |
| Antenna                     |   |
| Interface                   | SMA   |
| Frequency Range (MHz)       | 800-2800  |
| Input Impedence (Ohm)       | 50  |
| Gain (dBi)                  | 3.5   |
| Polarization Type           | Vertical  |
| Radiation Direction         | Omnidirectional   |
| VSWR                        | <1.5  |
| Max. Input Power (W)        | 50  |
| Length (mm)                 | 260   |
| Cable Length (mm)           | 3000  |

## Overview:

1. SIM Tray
2. SIM Tray Lock (open SIM Tray by pressing the lock with a pen)
3. USB Interface
4. Headphone Jack
5. LED 1 (green)
6. LED 2 (red)
7. SMA Antenna interface



## The Status LEDs:

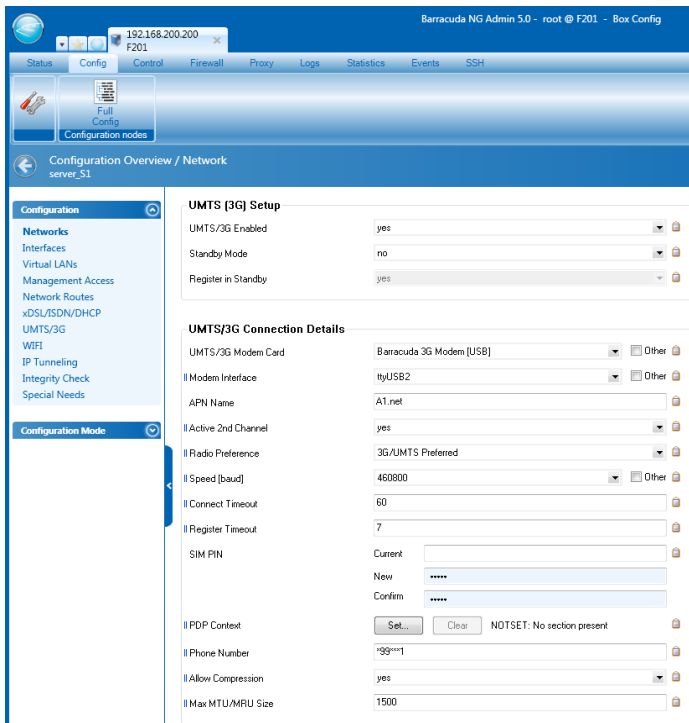
Your Barracuda M10 USB-Modem is equipped with two status LEDs which indicate the operational state of the modem by changing between off, slow blinking, fast blinking and steady glowing. The table below shows the different meanings of the different glowing states:

| LED 1 | LED 2 | State         | Meaning  |
|-------|-------|---------------|--|
| -     | RED   | Steady        | SIM card missing, no PIN set, not in Provider net, ERROR |
| GREEN | -     | Blinking      | Successful 3G/UMTS connection with provider established  |
| GREEN | -     | Fast Blinking | Data transfer using 3G/UMTS uplink                       |
| GREEN | RED   | Blinking      | Successful EDGE connection with provider established     |
| GREEN | RED   | Fast Blinking | Data transfer using EDGE uplink                          |

## Getting Started

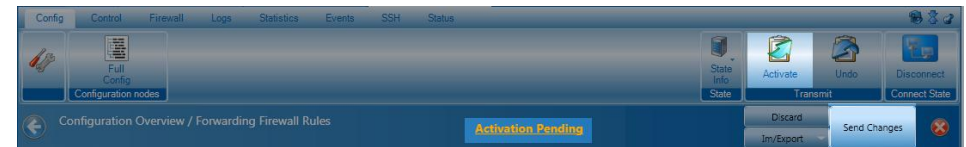
- 1) Open the SIM card tray by carefully pressing on the tray lock which is situated next to the tray, ideally by using a pen. Remove the SIM card tray and place the SIM card in the tray.

- 2) Connect the USB modem to a free USB port on your Barracuda NG Firewall by using the included USB extension cable. Note: The Barracuda NG Firewall appliance needs to be powered-off, as otherwise the modem driver will not be initialized.
- 3) Connect the external antenna to the SMA interface of the USB modem. The external antenna is equipped with a magnetic base thus allowing for convenient placement on racks or any other metal surfaces.
- 4) Place the USB Modem. Ideally use the included Velcro tape for affixing the USB Modem e.g. to the Barracuda NG Firewall Appliance or deploy the modem with a standard cap rail.
- 5) Power on the Barracuda NG Firewall and modify the UMTS/3G network settings by navigating to **Config > Network > UMTS/3G**
- 6) Set UMTS/3G Enabled to **YES**
- 7) For **UMTS/3G Modem Card** choose **Barracuda 3G Modem [USB]** from the drop-down-list.
- 8) Enter the **APN Name** of the provider (available from the provider)
- 9) Enter the **SIM PIN** number (if PIN needed)
- 10) Enter the **Phone Number** for dial-in (available from the provider)



## 11) Commit Changes

To commit all previously done configuration steps, the new configuration needs to be activated at the Barracuda NG Firewall. → Click **Send Changes** followed by **Activate**.

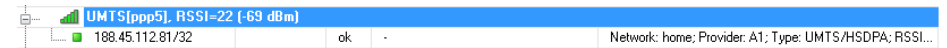


## 12) Network Activation

Navigate to **Control > Box** and click **Activate New** within the **Network Configuration** section. Click **Force** in the appearing **Network Activation** pop-up window.

Wait for the **Activation Succeeded** dialog, and then click **OK**. **Note:** Due to network activation you may lose connection to the appliance. Select **Reconnect** (upper right) to reconnect to the appliance.

## 13) Navigate to **Control > Network** and check the availability of the 3G/UMTS uplink (ppp5)



## 14) In order to restart, switch-off or stop the 3G/UMTS connections navigate to **Control > Box > Dynamic Networks**

