

The Barracuda Backup Service is an affordable, integrated local and offsite data backup solution, combining an onsite appliance with a monthly subscription plan. Data is replicated to two offsite locations, providing both onsite backups for the fastest restore times as well as secure offsite storage for disaster recovery.



## 1 Getting Started

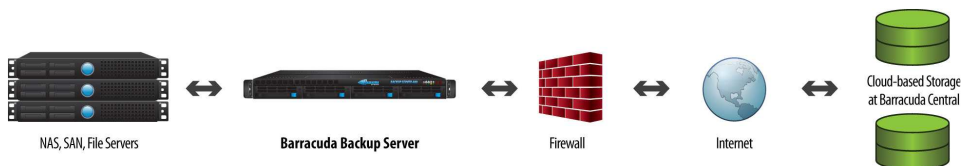
This guide provides you with setup instructions for the Barracuda Backup Service. We recommend reading these instructions fully before starting the setup. To initiate your Barracuda Backup Service, you will need the following:

- Barracuda Backup Server
- AC power cable
- Ethernet cables
- Barracuda Backup Server serial number and linking code (on right)
- Connectivity and access information for servers to backup

## 2 Physical Installation

To install the Barracuda Backup Server:

1. Fasten the Barracuda Backup Server to a 19-inch rack or place it in a stable location.
2. Connect an ethernet cable from your network switch to the WAN ethernet port on the back panel of the Barracuda Backup Server.
3. Press the POWER button on the front panel to turn the unit on.



## 3 Optional IP Address and Network Settings Configuration

If your Barracuda Backup Server is located behind a corporate firewall, you may need to open the following ports to allow communication between the Barracuda Backup Server and Barracuda Networks:

- Ports 80, 443, 1194, 5120-5129 outbound for both TCP and UDP traffic. The Barracuda Backup Server uses these ports to transfer data over the Internet to the offsite storage location. If you would like to restrict the outbound network traffic on these ports to only reach Barracuda Networks, please contact Barracuda Networks Technical Support.

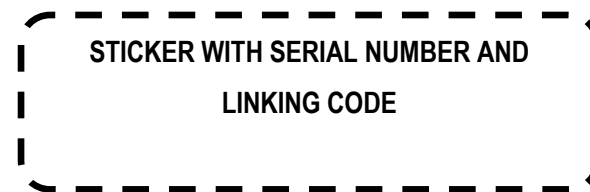
By default, your Barracuda Backup Server is configured to obtain an IP address on your network using DHCP. If you need to specify a static IP, you can use the console administration interface by connecting a monitor and keyboard to the Barracuda Backup Server. Instructions for using the console administration interface can be found online at <http://backup.barracuda.com/support>. If DHCP is acceptable, proceed to Step 4.

## 4

### Linking your Barracuda Backup Server

Your Barracuda Backup Server needs to be linked in your Barracuda Backup Account online before you can activate your subscription plan and initiate data backups. **You should have billing information (credit card recommended) available for your subscription plan to complete the linking process.**

1. Go to <http://login.barracuda.com> and log in. If you do not already have an account, click **Create a new account** under the Username field, follow the account creation instructions and log in.
2. Once logged in, click the **Backup Service** button at the top of the screen, and then click **Link a Barracuda Backup Server** on the left of the page.
3. On the **Validation** page, enter the serial number and the linking code for your Barracuda Backup Server from the sticker below and click **Continue**.
4. Complete the form and choose your storage subscription plan.



\*This area must accommodate a 4" x 2.25" sticker!\*

## 5

### Verify Connection to Barracuda Networks

The Barracuda Backup Server you have just installed, powered on and linked should be listed on the left with a green status light to the right of its name. If the status of your Barracuda Backup Server is green, please continue on to the next

step. Otherwise, please call Barracuda Networks Technical Support or consult Step 3 to fix the network settings and connectivity for your backup server.

## 6 Configure Backup Source Devices

Follow these instructions to setup servers located on the same network as your Barracuda Backup Server as Backup Source Devices.

1. Login at <http://login.barracuda.com>.
2. Select the Backup Server on the left you want to setup.
3. Go to the **Backup** tab and choose **Sources**.
4. Click **Add Computer** at the top left to add a backup source.
5. Enter the following information regarding this backup source:
  - **Computer Description**, for identification purposes only.
  - **Computer Hostname** or **IP address**. The values must be resolvable on your local network.
  - **Computer Type** of the device.
  - The **connection information** requested based on the Server Type you chose. For Windows servers: It is recommend you **Enable Agent Software** and install the freely available Barracuda Backup Agent software. Otherwise, you will need to enter the username (include "domain\" if the server is part of a Windows domain) and password for the Barracuda Backup Server to use to make a SMB/CIFS network connection to the server to access your data.
6. Click **Save Changes**.

*Repeat steps 6.3 through 6.6 for every server that you want to back up.*

## 7 Configure Windows Data Sources (Full System, System State, File System Data, Exchange, MS-SQL or HyperV)

Follow these instructions in the Barracuda Backup Web interface to identify the Data Source to be backed up by the Barracuda Backup Server using the Barracuda Backup Agent.

1. The Barracuda Backup Agent software must be installed on the Windows server that is configured as the Data Source Device. This software can be found in the Software Download section under the **Support** tab.
2. Select the Backup Server on the left you want to setup.
3. Go to the **Backup** tab and choose **Sources**.
4. Click **Add Data Source** to the right of the Backup Source Device.
5. Enter a description of this Data Source that will help you easily identify it in your sources list and backup reports.
6. Choose the Data Type **Barracuda Agent Software**.
7. You can test connectivity between the Barracuda Backup Agent installed on your Backup Source Device and your Barracuda Backup Server using the Test Software Connectivity button.
8. You can choose **Select all items**, which will backup the entire computer, or **Select specific items** to backup.
9. You can optionally use SQL Server Authentication if required by your setup.

10. Click **Save Changes**.

*Repeat this process for each Windows Data Source you want to back up.*

## 8 Configure Network Addressable Storage Data Sources

Follow these instructions in the Barracuda Backup Web interface to identify the data shares on your servers that are to be directly backed up by the Barracuda Backup Server using standard network connection protocols.

1. Select the Backup Server on the left you want to setup.
2. Go to the **Backup** tab and choose **Sources**.
3. Click **Add Data Source** to the right of the Backup Source Device.
4. Enter a description of this Data Source that will help you easily identify it in your sources list and backup reports.
5. Choose data type **File Share** for this type of backup.
6. Enter the exact name of the Share on your server needed to access this Data Source from devices on the local network. You can test Share connectivity using the Test Share button to the right of this field.
7. Choose a default user access policy for the backups of this Data Source.
8. You can optionally select specific folders under the Share as your Data Source if you do not wish to backup the entire Share.
9. Click **Save Changes**.

*Repeat this process for each data share that you want to add as a Data Source.*

## 9 Add Backup Schedules

Follow these instructions in the Barracuda Backup Web interface to establish your Backup Schedules.

1. Select the Backup Server on the left you want to setup.
2. Go to the **Backup** tab and choose **Schedules**.
3. Click **Add a Schedule** at the top left of the page.
4. Enter a descriptive schedule name for your future reference. The schedule name is a short description of when this schedule will run.
5. Check each day you want this backup schedule to run.
6. Indicate the time when you would like a backup to be run on the days you have selected above. Optionally, you can also repeat the backup process at a certain interval throughout the day to achieve continuous protection.

**Note: Your initial backup will take some time to complete. You can view the status of your backups in the Reports section under the Backup tab of your Barracuda Backup Account.**

### Contact and Copyright Information

Barracuda Networks Inc. 3175 S. Winchester Blvd., Campbell, CA 95008 USA • phone: 408.342.5400 • fax: 408.342.1061 • [www.barracuda.com](http://www.barracuda.com)  
Copyright 2007-2010 © Barracuda Networks, Inc. All rights reserved. Use of this product and this manual is subject to license. Information in this document is subject to change without notice. Barracuda Backup Server is a trademark of Barracuda Networks Inc. All other brand and product names mentioned in this document are registered trademarks or trademarks of their respective holders. 092409-10v2-06-1122a