



Barracuda NG Network Access Client



Release and Migration Notes

Version 2.0 SP5

Copyright Notice

Copyright © 2004-2011, Barracuda Networks, Inc., 3175 S. Winchester Blvd, Campbell, CA 95008 USA

www.barracuda.com

v2.0SP5-111014-01-1014

All rights reserved. Use of this product and this manual is subject to license. Information in this document is subject to change without notice.

Trademarks

Barracuda NG Firewall is a trademark of Barracuda Networks. All other brand and product names mentioned in this document are registered trademarks or trademarks of their respective holders.

General	5
Minimum System Requirements	5
What's New with	
Barracuda NG Network Access Client SP5?	6
New [PoISrv] Adapter Firewall Network Object	6
Disable Bluetooth PAN Devices	6
Custom Password to Turn Client Off	7
New Column in VPN Control to Show Next Fallback Profile	7
Firewall Logging Optimized	7
Bugfixes Included with	
Barracuda NG Network Access Client SP5	8
Known Issues	9

General

This is the official firmware release version SP5 for the Barracuda NG Network Access Client. You can use all of your existing licenses with this new firmware.

Minimum System Requirements

Table 1–1 *Minimum system requirements for Barracuda NG Network Access Client*

Operation Systems	Windows XP, Windows Vista (32-bit, 64-bit), Windows 7 (32-bit, 64-bit)
Disk space	50 MB
RAM	1 GB
Processor	1 GHz

What's New with Barracuda NG Network Access Client SP5?



See also the Barracuda NG Network Access Client SP5 Administrator's Guide for in-depth information on changes and new features. This document is downloadable through <http://www.barracuda.com/doc>

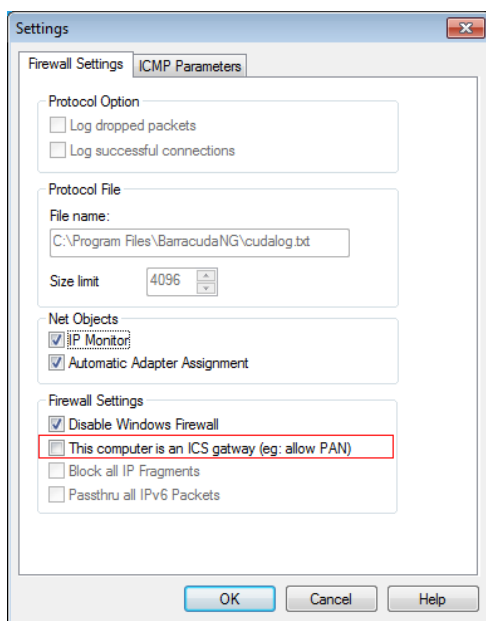
New [PoISrv] Adapter Firewall Network Object

With Barracuda NG Network Access Client SP5, a reference to the Access Control Service is available to which a connection was established.

	Adapter [LPSA]	0	multi	Ref: Local Area Connection
	Adapter [VPN]	0	multi	
	Adapter [Wireless]	0	multi	
	Local Area Connection 2	0	Connected	169.254.1.10
	Local Area Connection	1	Connected	172.22.0.233

Disable Bluetooth PAN Devices

With SP5, active PAN network devices are deactivated per default. Acting as ICS gateway must now dedicatedly be allowed within the **Firewall Settings** configuration.



Custom Password to Turn Client Off

With Barracuda NG Network Access Client SP5, it is possible to define a password that must be entered by the user in order to locally shut down the client.

New Column in VPN Control to Show Next Fallback Profile

With SP5, the VPN Control contains an extra column displaying the next fallback profile in the queue to be used.

Firewall Logging Optimized

The Firewall logging was optimized in Barracuda NG Network Access Client SP5 in order to better prepare the data for automated logfile analysis.

Bugfixes Included with Barracuda NG Network Access Client SP5

Table 1–2 Bugfixes

Description
The asynchronous loopback communication service caused the client's tray program to stall and display the wrong icon. This issue was fixed.
An issue with the personal firewall was fixed, now correctly closing forward slots also if there are no TCP flags.
The health validation process was executed in certain situations although it was not needed. This issue was fixed.
An issue causing a service crash on Russian versions of Windows XP was fixed.
Direct Access did in some cases not work as intended when the internet connection was lost for more than one minute, generating the following error message in the client status: User Tray Process did not response This issue was fixed.
The Health Agent erroneously proceeded with the quarantine countdown during an initialization process. This issue was fixed.
Under certain circumstances, the client could under Windows XP erroneously prevent other processes from starting, generating the following error message: The application failed to initialize properly (0xc0000142) This issue was fixed.
In rare cases, the personal firewall generated unnecessary pop-up dialog windows, e.g. asking if the user wanted to allow ICMP to access the internet. This issue was fixed.
The VPN Last Error Message erroneously remained readable although a VPN connection was successfully established. This issue was fixed.
Proxy connections established for VPN Connection Probing did erroneously also use other protocols than TCP. This issue was fixed.
The internal process for retrieving the current user and domain was erroneously too slow. This issue was fixed.
Necessary registry manipulation processes did not work as intended when the client was running without administrator rights. This issue was fixed.
The VPN connect message did erroneously not pop up when Direct Access was enabled. This issue was fixed.
On usage of fallback profiles, previously entered passwords for identical servers were not stored. Therefore, users had to unnecessarily re-enter passwords on reconnect, in some cases plus additional one-time passwords. This issue was fixed, passwords are now stored and automatically applied across profiles as necessary.
Certain configuration items under Personal Firewall > Settings > Firewall Settings could erroneously not be changed when the client was executed for the first time. This issue was fixed.
The firewall user interface was erroneously lagging after NIC or IP address changes. This issue was fixed.
In rare cases, the netstat socket table was empty during startup, causing the personal firewall to close all open slots. This issue was fixed.
If the health agent found an Anti-Virus product that was not defined as valid within the health SP5, up to now a pop-up was displayed containing the message that no anti-virus product was found at all. This issue was fixed by respectively customizing the message text.

Note



Further minor bugfixes may exist that have been fixed but are not listed here.

Known Issues

Note



Advice about known issues is available at <http://login.barracuda.com/>.

